

**Cut the cord  
Keep the power**



Expanding  
your  
Cordless  
Capabilities

**stryker**  
INSTRUMENTS

# Expanding your Cordless Capabilities



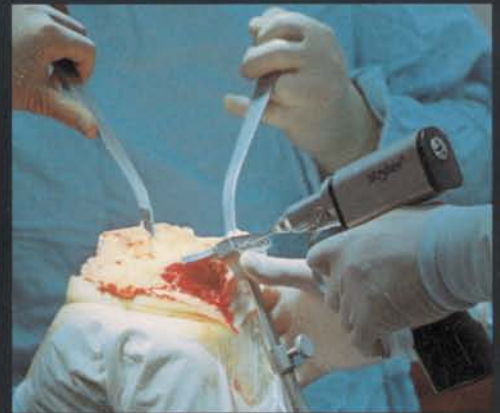
**Stryker System 2000 Heavy Duty Battery Powered Instruments have been proven both powerful and reliable for Total Joint Replacement. The SYSTEM 2000 CORDLESS DRIVER will expand your application of battery powered instruments, and the freedom to which you have become accustomed.**

**Cut The Cord...Keep The Power.**



## **Powerful**

*Capable of drilling, tunneling and reaming.*



## **Versatile**

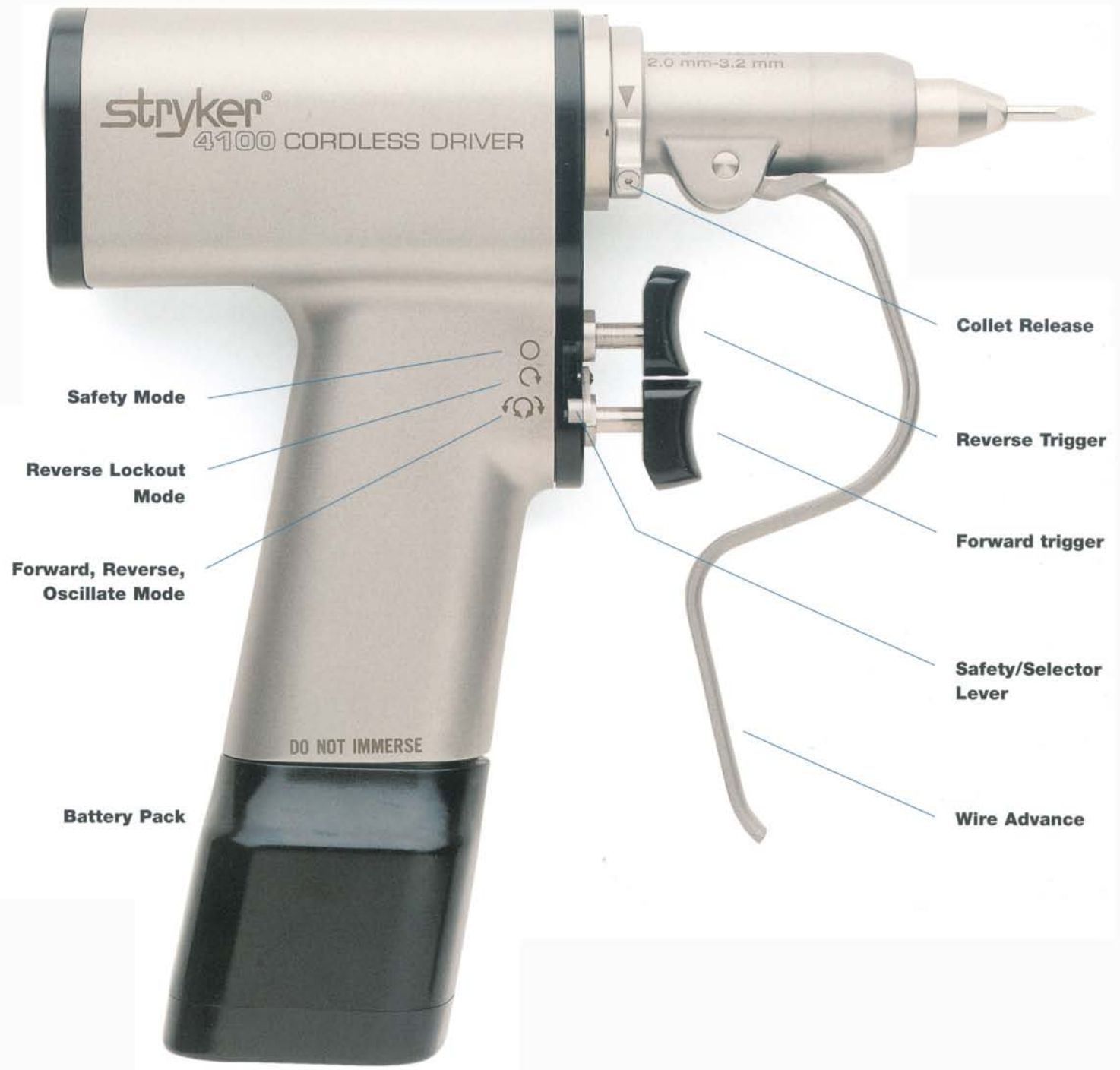
*Useful for most orthopedic procedures. Eliminates the need for multiple handpieces.*



## **Cordless**

*Improved maneuverability.*

# Introducing The System 2000 Cordless Driver



# Features

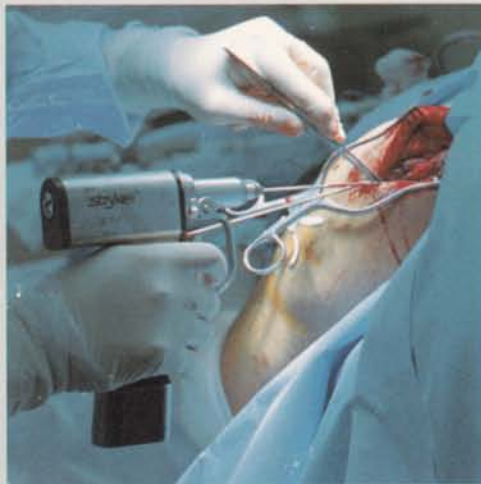


## Wiring

- *Automatically adjustable wire collet simplifies the placement of wires.*
- *Integrated oscillating feature assists in accurate wire placement.*

### Collet options for Wiring:

- 4100-062 Wire Collet\*
- 4100-131 1/4" Jacobs Drill
- 4100-132 5/32" Jacobs Drill



## Pinning

- *Automatic pin placement and the driving of guide pins.*

### Collet options for Pinning:

- 4100-125 Pin Collet\*
- 4100-131 1/4" Jacobs Drill
- 4100-132 5/32" Jacobs Drill



## Drilling

- *Accommodates variety of drilling demands.*
- *Oscillating feature assists in accurate placement of drill bits and helps to prevent spooling of soft tissue.*

### Collet options for Drilling:

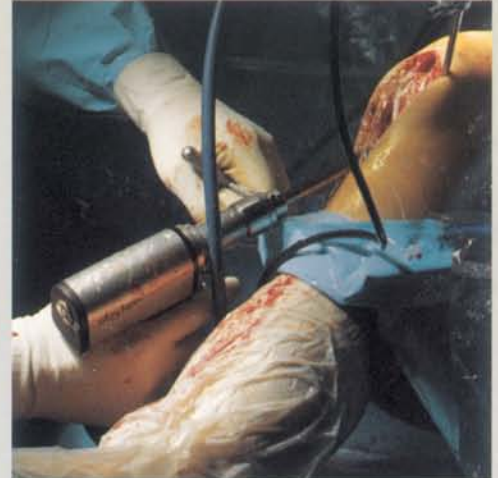
- 4100-110 Synthes® Drill\*
- 4100-131 1/4" Jacobs Drill
- 4100-132 5/32" Jacobs Drill
- 4100-135 Hudson®/Mod Trinkle Drill
- 4100-160 Trinkle Drill

## Tunneling

- Power to tunnel with trephines and large diameter drill bits.

### Collet options for Tunneling:

- 4100-131 1/4" Jacobs Drill\*
- 4100-231 1/4" Jacobs Reamer



## Reaming

- Reamer collets deliver high torque.
- Intermedullary Reaming for I. M. Nails.

### Collet options for Reaming:

- 4100-210 Synthes® Reamer\*
- 4100-231 1/4" Jacobs Reamer
- 4100-235 Hudson®/Mod Trinkle Reamer
- 4100-260 Trinkle Reamer



## Sawing

- Variable speed for precision cutting.
- Unique tool-less blade mount reduces blade whip and flex.

### Collet options for Sawing:

- 4100-400 Sagittal Saw Attachment\*



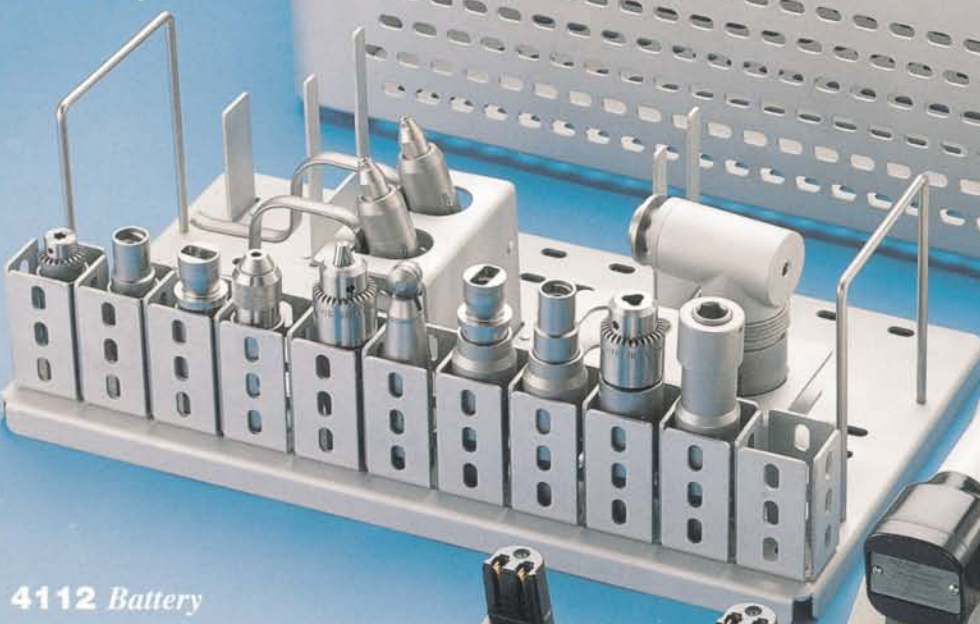
\* Items pictured in featured surgical procedure

# Accessories

## **4100-451 Sterilization Case**

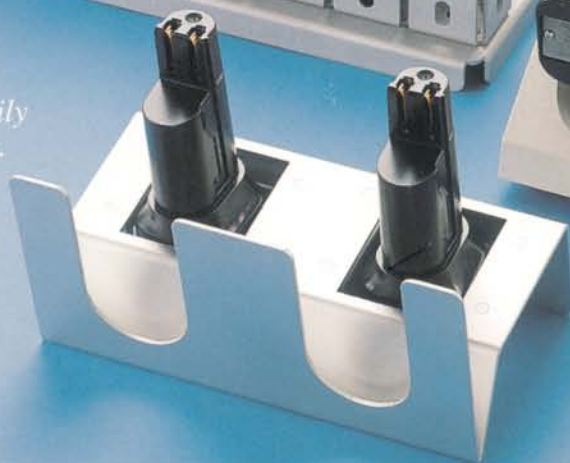
- Holds all accessories for complete sterilization.
- Convenient inner tray presents instruments on a sterile field.

### *Inner Tray*



## **4112 Battery**

- Easily locked in and easily removed from handpiece.
- Small and lightweight.
- Sufficient run time to complete most surgical procedures with only one battery.
- Flash autoclaveable or gas sterilizeable.
- Battery Adaptor used to charge Cordless Driver Battery in System 2000 Charger.
- Easily slides in to System 2000 Charger.



## **4100-406 Battery Sterilization Rack**

- Orients batteries in proper sterilization position.
- Presents Cordless Driver in surgery ready position on a sterile field.



## **2110-120-100 Charger**

- Quickly charges Cordless Driver and other System 2000 batteries.
- Modular design allows for expansion to 4, 6, or 8 pockets.
- Indicator lights provide battery status feedback with "Charge", "Ready", and "Replace" indicators.
- Accepts/charges small Cordless Driver Batteries.

# Collets

## Drill Collets

- Variety of collets accept drill bits, taps, and automatic screwdriver attachments.
- Collets ensure quick, precise accessory placement, while hand-piece provides cutting speed control.



**4100-125**  
Pin Collet  
(Accepts pins from  
.078-.125" dia.)



**4100-62**  
Wire Collet  
(Accepts wires from  
.028-.071" dia.)



**4100-110**  
Synthes® Drill



**4100-132**  
5/32" Jacobs Drill  
w/key



**4100-131**  
1/4" Jacobs Drill  
w/key



**4100-135**  
Hudson® / Modified  
Trinkle Drill



**4100-160**  
Trinkle Drill

## Reamer Collets

- Delivers high torque.
- Excellent for reaming of Intermedullary Canal and for A.C.L. reconstruction applications.



**4100-210**  
Synthes® Reamer



**4100-235**  
Hudson® / Modified  
Trinkle Reamer



**4100-231**  
Jacobs Reamer  
w/key



**4100-260**  
Trinkle Reamer

## Right Angle Reamer

- Deliver high torque with improved surgical approach in Intermedullary Reaming.
- Integral safety mechanism prevents accidental reversing of flexible reamers.



**4100-310**  
Right Angle Drive  
Synthes® Reamer



**4100-335**  
Right Angle Drive  
Modified Trinkle Reamer

## Specialty Collet

- Accepts Stryker Precision™ Sagittal blades.



**4100-400**  
Sagittal Saw Attachment

# Blades

Stryker Precision Blades are available in various sizes and thicknesses to address the specific requirements of each procedure.

## BLADES FOR CORDLESS DRIVER

When Ordering, Please Specify 2296-3 for .015" Thick Blades or 2296-33 for .020" Thick Blades



**MEDIUM,  
NARROW,  
SAFEDGE™** 2296 3 51  
2296 33 51



**ACL  
10MM STOP** 2296 3 101  
2296 33 101



**WIDE** 2296 3 102  
2296 33 102



2296 3 104  
2296 33 104



**WIDE** 2296 3 106  
2296 33 106



2296 3 108  
2296 33 108



**AGGRESSIVE** 2296 3 212  
2296 33 212



2296 3 225  
2296 33 225



2296 3 206  
2296 33 206



**MEDIUM** 2296 3 411  
2296 33 411



2296 3 105  
2296 33 105



2296 3 111  
2296 33 111



2296 3 125  
2296 33 125



**NARROW** 2296 3 410  
2296 33 410



2296 3 103  
2296 33 103



2296 3 412  
2296 33 412



2296 3 114  
2296 33 114



2296 3 414  
2296 33 414



2296 3 115  
2296 33 115



**EXTRA SHORT  
NARROW** 2296 3 413  
2296 33 413

# Ordering

## COMPLETE SYSTEM 2000 ORDERING INFORMATION

### PRODUCT NAME

#### CORDLESS DRIVER

<b>4100</b>	<b>Cordless Driver (includes wire collet 4100-62)</b>
	<b>Drill</b>
4100-131	1/4" Jacobs Drill w/ key
4100-132	5/32" Jacobs Drill w/ key
4100-62	Wire Collet (Accepts wires from .028-.071" dia.)
4100-125	Pin Collet (Accepts pins from .078-.125" dia.)
4100-110	Synthes® Drill
4100-160	Trinkle Drill
4100-135	Hudson®/ Modified Trinkle Drill
	<b>Reamer</b>
4100-210	Synthes® Reamer
4100-231	Jacobs Reamer w/ key
4100-235	Hudson®/ Modified Trinkle Reamer
4100-310	Right Angle Drive Synthes® Reamer
4100-335	Right Angle Drive Modified Trinkle Reamer
4100-260	Trinkle Reamer
	<b>Specialty</b>
4100-400	Sagittal Saw Attachment
4100-220	Radiolucent Drive (not pictured)

### PRODUCT NAME

#### HANDPIECES

<b>2102</b>	<b>Drill</b>
277-82-113	Hudson® Adapter
277-92-125	Wire and Pin Chuck (Accepts wires and pins from .062-.125" dia.)
277-82-131	1/4" Jacobs Chuck w/ key
2102-135	Modified Trinkle Adapter
277-82-200	ASIF / Synthes® Adapter
277-82-250	Osteo Adapter
<b>2104</b>	<b>Reamer</b>
2104-100	Right Angle Drive Modified Trinkle Reamer
2104-110	Right Angle Drive Synthes® Reamer
277-84-131	1/4" Jacobs Chuck w/ key
277-94-125	Wire and Pin Chuck (Accepts wires and pins from .062-.156" dia.)
277-94-160	Trinkle Adapter
<b>2106</b>	<b>Reciprocating Saw</b>
<b>2108</b>	<b>Sagittal Saw</b>

For Heavy Duty Blade Specifications, please refer to the Stryker Cutting Accessory Guide

### PRODUCT NAME

#### GENERAL ACCESSORIES

2100-120-100	Battery Charger
2115	Battery Pack (System 2000)
2106-151	Sterilization Case
2106-106	Battery Sterilization Rack
	<b>Cordless Driver</b>
4112	Battery Pack (Cordless Driver)
4110-112	Battery Adaptor
4100-451	Sterilization Case
4100-406	Battery Sterilization Rack
2296-400	Organizer
2296-401	Surgical Power Station
1605-10	Light Mineral Oil
4100-131-231	Universal Jacobs Chuck Key