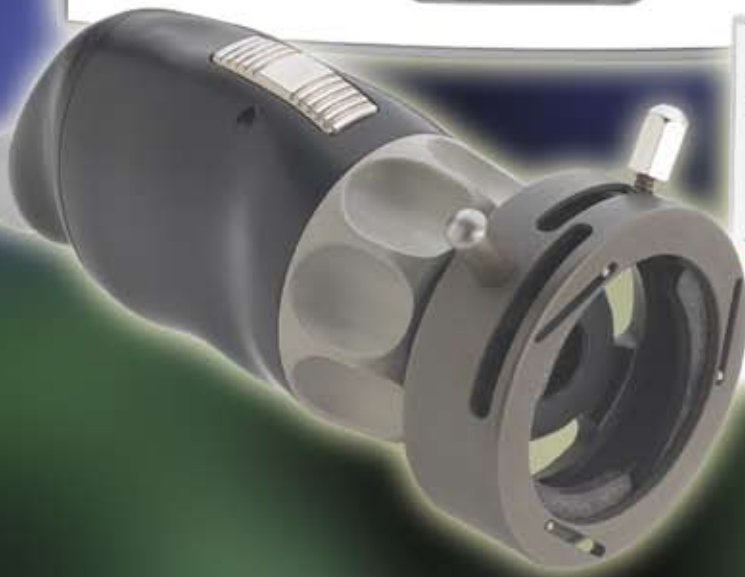


EXPERIENCE THE INNOVATION, TRUST OUR EXPERIENCE



IM3300 ENHANCED DEFINITION 3CCD CAMERA SYSTEM & LS7500 LIGHT SOURCE

Since 1997 Linvatec has been known as the leader in Autoclavable Video Systems. With the release of our 4th generation Autoclavable System you will see the difference, feel the difference and experience the innovation. New system features include, a new ergonomically designed camera head for improved comfort, ShockFlex™ Prism Mounting for durability and Progressive Scan technology for high definition image quality.

ConMed Linvatec's experience means long term innovation and reliability



CONMED LINVATEC'S IM3300 ENHANCED DEFINITION 3CCD CAMERA SYSTEM

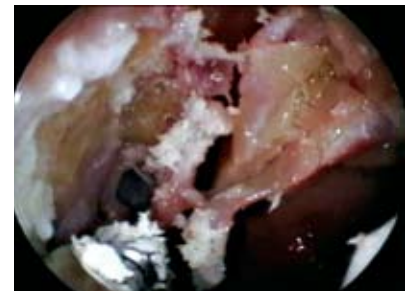
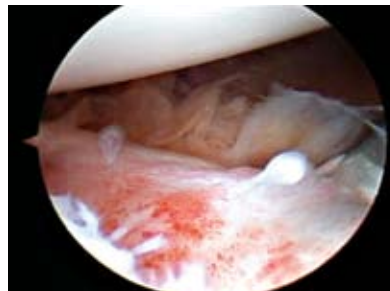
ConMed Linvatec's IM3300 Digital 3CCD Camera Series

- 480P Progressive Scan Output
- 4th Generation Autoclavable Camera Head
- Multiple Pure Digital Outputs-DVI, SDI
- Electronic Zoom
- Programmable Presets for individual or specialty preferences
- Multi-function, programmable remote camera head buttons
- High resolution with outstanding light sensitivity
- New Ergonomic Camera Head Design



CONMED LINVATEC'S LS7500 LIGHT SOURCE

- 300 Watt Xenon Bulb
- Standby Button for safety
- Accepts most light guide fittings
- Bulb Life Indicator
- Enhanced Numerical Aperture - Improved light distribution



AUTOCLAVABLE CAMERAS — CONMED LINVATEC IS THE CHOICE

Durability – Due to ConMed Linvatec's experience and superior design, our autoclavable head does not degrade in performance or durability due to steam sterilization. You can expect to experience the benefits of ConMed Linvatec's autoclavable camera system for years to come.

Magnetic Rocker Switch – Proprietary Rocker Design makes picture taking a snap. 4 programmable button functions. Zoom, Brightness, Stills, or Motion Video.

Integrated Coupler Optics – Our Patented Magnetic Focus Drive System prevents fogging, debris and build-up at critical focal points, improving overall image quality.

Titanium Capsule – Revolutionary sealing and manufacturing techniques prevent steam penetration to sensitive electrical and optical components. This allows users to steam sterilize the camera head creating an efficient and effective method to expedite OR turn-around time.

ShockFlex™ Prism System – Designed to protect your camera heads from accidental drops and everyday handling. Unit test protocol: 40 in. drop onto linoleum covered cement floor immediately after an autoclave cycle.

Ergonomic Camera Head Design – Smaller, lighter weight and more comfortable for users in all specialties.

High Temperature Ultem* Housing – Material specifically chosen for its ability to cool 50% – 60% faster than metal materials following an autoclave cycle. Product is ready to use when you need it.

* Ultem is a registered trademark of General Electric Company



IM3300 CAMERA SYSTEM PRODUCT LINE

Camera Controllers

IM3300 NTSC Digital 3CCD Camera Controller
 IM3301 PAL Digital 3CCD Camera Controller

Camera Heads

IM3330 NTSC Autoclavable 3CCD Camera Head-Eyecup
 IM3332 NTSC Autoclavable 3CCD Camera Head-Cartridge
 IM3334 NTSC Autoclavable 3CCD Urology Camera Head
 IM3331 PAL Autoclavable 3CCD Camera Head-Eyecup
 IM3333 PAL Autoclavable 3CCD Camera Head-Cartridge
 IM3335 PAL Autoclavable 3CCD Urology Camera Head

LS7500 Light Source Product Line

LS7500 300 Watt Xenon Light Source
 LS7501 300 Watt Replacement Bulb

Accessories

IM9003 DVI Cable
 C3278 5mm Light Guide
 C3279 3mm Light Guide
 7451 Wolf/Dyonics Scope Fitting
 7452 ACMI Scope Fitting
 7453 Storz/Olympus Scope Fitting
 7455 Dyonics Light Source Fitting
 7456 ACMI Light Source Fitting
 7457 Storz Light Source Fitting
 7458 Olympus Light Source Fitting
 7459 Weck Xenon Light Source Fitting

Autoclavable Scopes

Description	Eyecup Catalog No.	Cartridge Catalog No.
1.9mm 0°	T1900	T1901
1.9mm 30°	T1930	T1931
2.5mm 0°	T2500	T2530
2.5mm 30°	T2530	T2531
2.5mm 70°	T2570	T2571
2.9mm 0°	T2900	T2901
2.9mm 30°	T2930	T2931
2.9mm 45°	T2944	T2945
2.9mm 70°	T2970	T2971
4mm 0°	QL4000	QL4001
4mm 30°	QL4300	QL4301
4mm 70°	QL4700	QL4701
5mm 0°	T5200	T5201
5mm 30°	T5230	T5231
5mm 45°	T5244	T5245
10mm 0°	T1000	T1001
10mm 30°	T1030	T1031
10mm 45°	T1045	T1046
10mm 0° Extended Length	T1000B	N/A
10mm 30° Extended Length	T1030B	N/A
10mm 45° Extended Length	T1044B	N/A

Camera Head Specifications

Image Device ¼ in. CCD
 Horizontal Resolution 800 lines
 Weight 5.67oz (160g) w/o cable 12.2oz 345g w/ cable
 Dimensions 1.48 in. (w) x 4.0 in. (l) x 1.78 in. (h)
 Light Sensitivity < 1 Lux
 Signal/Noise Ratio 64 db
 Cable Length 10 ft/3 meters
 Focal Length 18.8mm (IM3330, IM3331, IM3332, IM3333, & IM3336) 13.2mm (IM3334 & IM3335)

Camera Controller Specifications

Signal System EIA Standards, NTSC Color System
 CCIR Standards, PAL Color System
 Scanning System 2:1 Interlaced
 525 lines, 30 frames/second NTSC
 625 lines, 25 frames/second PAL
 Shutter Speeds 1/60 to 1/10000 seconds
 Video Outputs Composite- 1.0 V p-p, Sync neg., 75 ohms
 Y/C - Y - 1.0V p-p, Sync neg., 75 ohms
 C - (NTSC) - .286V p-p, 75 ohms
 C - (PAL) - .300V p-p, 75 ohms
 RGB (Red, Green, Blue & Sync)
 Y-Pb-Pr (480P)
 DVI
 SDI
 Power Requirements 110 VAC - 240 VAC, 50/60Hz
 Power Consumption 70VA
 Weight 7 lbs. (3.18 kg)
 Processor Dimensions 9.85" (w) x 15.2" (l) x 5.9" (h)
 250mm (w) x 386mm (l) x 150mm (h)
 Operating Temperature 20° F to 104° F (-7° C to 40° C)
 Storage Temperature -40° F to 122° F (-40° C to 50° C)
 Humidity 30% to 90%

Light Source Specifications

300 Watt Xenon Bulb : 500 Lamp Hours
 Typical Operating Requirements
 Input Voltage 100-240 VAC
 Input Line Frequency: 50/60Hz
 Power Consumption 475VA
 Fuse: Fast Blow 6.3 Amps 250
 Weight: 12.5 lbs. (5.7 kg)
 Dimensions: 9.85 in. (w) x 15.2 in. (l) x 5.9 in. (h)
 250mm (w) x 386mm (l) x 150mm
 Operating: Ambient Temperature: +42°F to 86° F (+ 6° C to 30° C)
 Relative Humidity: 30% to 85%
 Atmospheric Pressure: 700hPa to 1060 hPa
 Transport and Storage: Ambient Temperature: -40°F to 120° F (-40° C to 49° C)
 Relative Humidity: 10% to 100%
 Atmospheric Pressure: 500hPa to 1060hPa

CONMED CORPORATION PRODUCT AREAS:

ARTHROSCOPY • ELECTROSURGERY • ENDOSCOPY • ENDOSURGERY • GASTROENTEROLOGY • INTEGRATED SYSTEMS • PATIENT CARE • POWERED INSTRUMENTS • PULMONOLOGY



11311 Concept Boulevard
 Largo, FL 33773-4908
 (727) 392-6464
 Customer Service: 1-800-237-0169
 FAX: (727) 399-5256
 International FAX: +1 (727) 397-4540
 email: customer_service@linvatec.com
 www.linvatec.com