

**USA Series™ Office Hysteroscopes**

The CIRCON ACMI™ USA Series Office Hysteroscopes are ideal for visualization of the uterine cavity. Little or no anesthesia is necessary for these small diameter rod lens hysteroscopes.



**Features**

- Small 2.7 mm diameter telescope; 3.5 mm diagnostic sheath
- Rod lens optics
- Diagnostic and operative continuous flow sheaths available
- 25 cm working length

**Benefits**

- Minimal trauma; designed for easy insertions
- Excellent visualization
- Meets all your needs
- Versatile for all clinical settings

**Telescopes**

- G27-30** USA Series Foroblique (30°) Telescope, 2.7 mm
- G27-30A** USA Series Autoclavable Foroblique (30°) Telescope, 2.7 mm
- G27-30W** USA Series Foroblique (30°) Telescope, 2.7 mm, wide angle
- G27-30WA** USA Series Autoclavable Foroblique (30°) Telescope, 2.7 mm, wide angle
- G27-70W** USA Series Lateral (70°) Telescope, 2.7 mm diameter, wide angle
- G27-70WA** USA Series Autoclavable Lateral (70°) Telescope, 2.7 mm diameter, wide angle
- 98-0340** Light Post Adapter for Storz / Olympus Light Guides
- 98-0341** Light Post Adapter for Wolf Light Guides

**Sheaths & Accessories**

- GY275-CFH** USA Series Continuous Flow Operative Hysteroscope Sheath System, 5.5 mm, 1.7 mm (5 Fr) working channel, round profile, includes:
  - GY275-S** USA Series Continuous Flow Operative Hysteroscope Sheath
  - GY275-B** USA Series Continuous Operative Flow Hysteroscope Bridge/ Obturator
- GY275-VO** USA Series Continuous Flow Operative Hysteroscope Visual Obturator
- GYS-2402H** USA Series Hysteroscope Diagnostic Sheath, 3.5 mm
- CS-G5** CIRCON Seal, green, silicone, for accessories 2 to 5 Fr (12/pkg)

**USA Series™ Micro-H™ Diagnostic Hysteroscope with Optional Continuous Flow (2.4 mm) Variety of Configurations for Diagnostic Capabilities**

The CIRCON ACMI™ Micro-H Hysteroscope offers a variety of configurations for diagnostic capabilities. The integrated system forms a small diameter hysteroscope (2.4 mm) utilizing advanced fiberoptics with diopter correction. Continuous flow is created by snapping on an outer sheath (3.5 mm). With its long 25 cm working length, this system makes hysteroscopy simple and versatile in your office, surgicenter, or operating room.

**Micro-H™**

**GYH-2402 Hysteroscope with GYS-2402H Sheath**



**Features**

- Small 2.4 mm diameter
- Irrigation channel: 0.7 mm
- Continuous flow outer sheath, 3.5 mm high flow
- Advanced fiberoptic lens design
- Semi-rigid technology
- Diopter correction

**Benefits**

- Easier cervical insertion
- Choice of CO<sub>2</sub> gas or liquid for uterine distension
- High flow outer sheath clears blood/debris from field of view
- Produces sharp, clear images
- Proven durability
- Can be used with or without corrective lenses

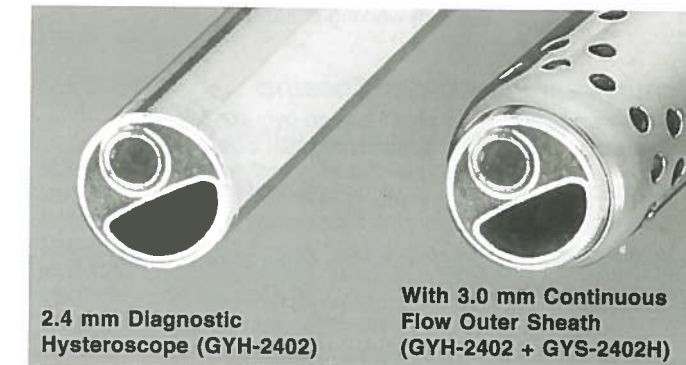
**Hysteroscope**

**GYH-2402** Micro-H Diagnostic Hysteroscope, 2.4 mm

**Continuous Flow Outer Sheath**

The continuous flow outer sheath snaps over the Micro-H Hysteroscope and provides drainage of distention medium.

**GYS-2402H** Micro-H Continuous High Flow Outer Sheath, 3.5 mm

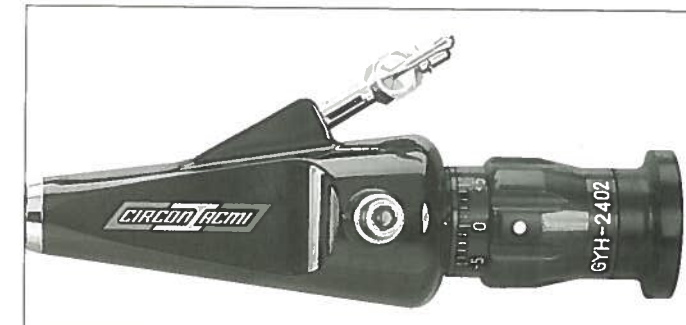


2.4 mm Diagnostic Hysteroscope (GYH-2402)

With 3.0 mm Continuous Flow Outer Sheath (GYH-2402 + GYS-2402H)

**SPECIFICATIONS**

<b>Hysteroscope Diameter:</b>	2.4 mm
<b>Sheath Diameter:</b>	3.5 mm
<b>Working Length:</b>	25 cm
<b>Focusing Ocular:</b>	Yes
<b>Direction of View:</b>	12°



Anes  
Arth  
Gastro  
Gyn  
Lap  
Urology  
Video  
Illum  
Ordering  
Index

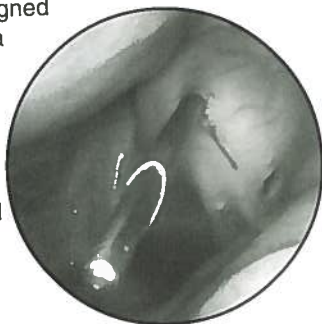
Anes  
Arth  
Gastro  
Gyn  
Lap  
Urology  
Video  
Illum  
Ordering  
Index

**Transvaginal Hydro® Laparoscopy (THL™)**

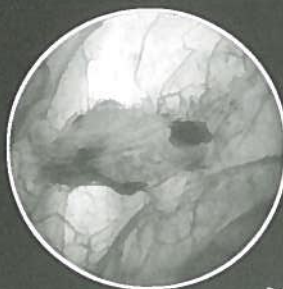
**A Different Perspective – An Innovative Procedure and Equipment**

Transvaginal Hydro Laparoscopy (THL) is a new procedure for visualizing the tubo-ovarian structures in infertile patients and patients with pelvic pain. THL is proposed as an acceptable alternative to diagnostic laparoscopy in some cases.

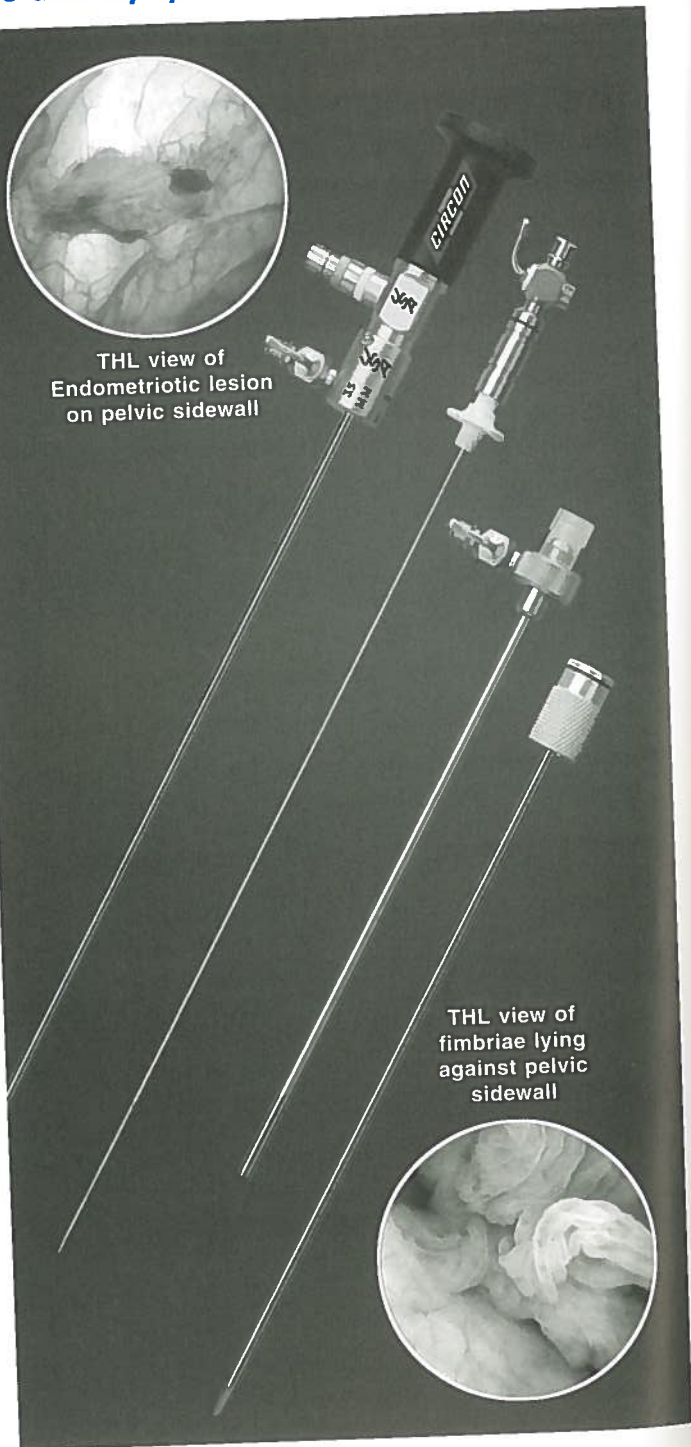
Transvaginal Hydro Laparoscopy is performed under local anesthesia using a specially designed Veress needle/ obturator/ cannula set and 2.7 mm telescope with continuous flow sheath. Cavity distension is achieved with normal saline. Hydroflotation allows inspection of the tubo-ovarian structures in their natural position without manipulation; adhesions, endometriosis, and other abnormalities are easily detected.



Laparoscopic view of puncture



THL view of Endometriotic lesion on pelvic sidewall



THL view of fimbriae lying against pelvic sidewall

**Features**

- First line diagnostic procedure for infertility and pelvic pain
- Easy to perform transvaginal needle technique
- Excellent visualization
- Simple, diagnostic procedure
- Evaluation of tubo-ovarian structures in their natural position

**Benefits**

- Well tolerated
- No pneumoperitoneum necessary; local anesthesia
- Effectively detects pelvic adhesions and other abnormalities
- Minimal manipulation necessary, less traumatic
- Can be combined with microhysteroscopy and chromopertubation for a total examination

- GYT-36CAK THL 3.6 mm Cannula Access Kit** includes:
- GYT-36C** THL Dilating Cannula, 3.6 mm
  - GYT-36D** THL Dilating Obturator, 3.6 mm
  - GYT-1625** THL Veress Needle, 1.6 mm 25 cm long
  - GYT-36CS** THL Cannula Seal, 12/pkg
  - GYS-2402H** Micro-H™ Continuous Flow Outer Sheath, 3.5 mm

**COMPANION PRODUCTS**

- GYT-1625R** THL Veress Needle Replacement, 5/pkg, non-sterile
- G27-30WA** USA Series™ Autoclavable Gynecology Foroblique Telescope, wide angle, 2.7 mm, 30°
- G27-70WA** USA Series™ Autoclavable Gynecology Lateral Telescope, wide angle, 2.7 mm, 70°
- 98-0340** Light Post Adapter for Storz / Olympus Light Guides
- 98-0341** Light Post Adapter for Wolf Light Guides

Gyn  
Lap  
Urology  
Video  
Illum  
Ordering  
Index